

# CULT FICTION

**8 Steps To Cult Indoctrination**



**DECODING**  
**THE LANGUAGE GAME 3.0**  
of Social Emotional Learning

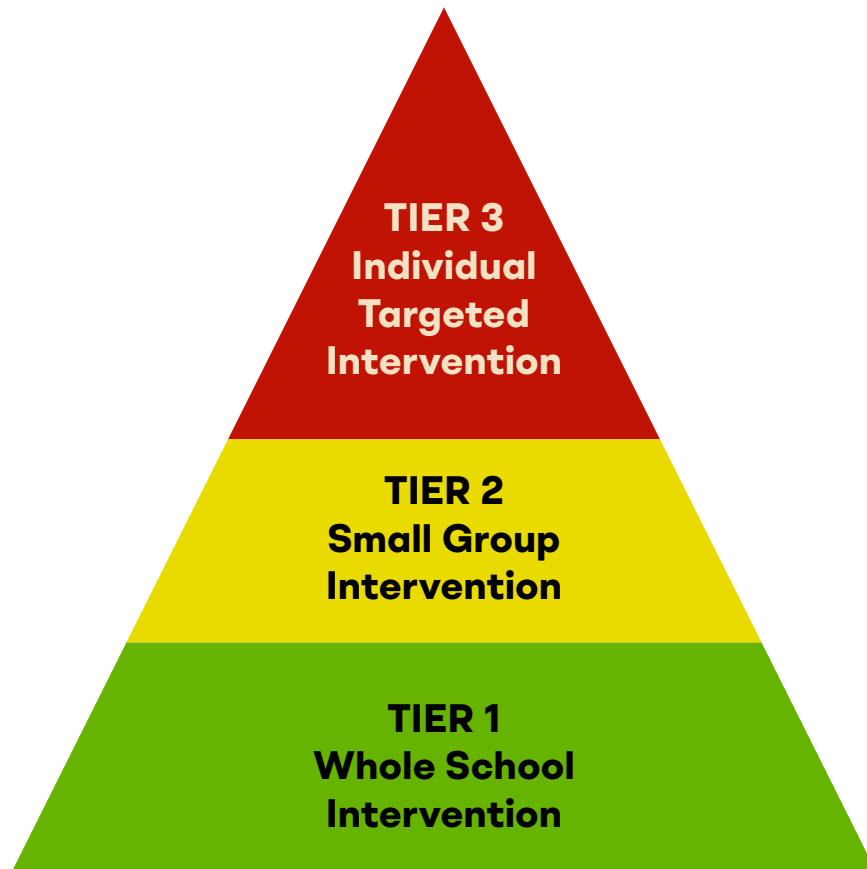


COURAGEISAHABIT.ORG

# Introduction

## 8 Steps to Cult Indoctrination

- What was once a constructive and well-intentioned model for preventative intervention for “at risk” children has been highjacked by radical ideology and is now the **LGBTQ Cult Recruiting Tool in Education**.
- **Every child** entering American Public Schools today is evaluated according to the **Multi Tiered System of Support (MTSS)**.
- All children are considered “at risk” because of their **conditioned biases** and the **systemically racist America** they live in.
- Evaluating every child as “at risk” will only **trap them** into a system that will continue to **indoctrinate them**.



Social and Emotional Learning (SEL) uses  
**Multi Tiered System of Support (MTSS)**

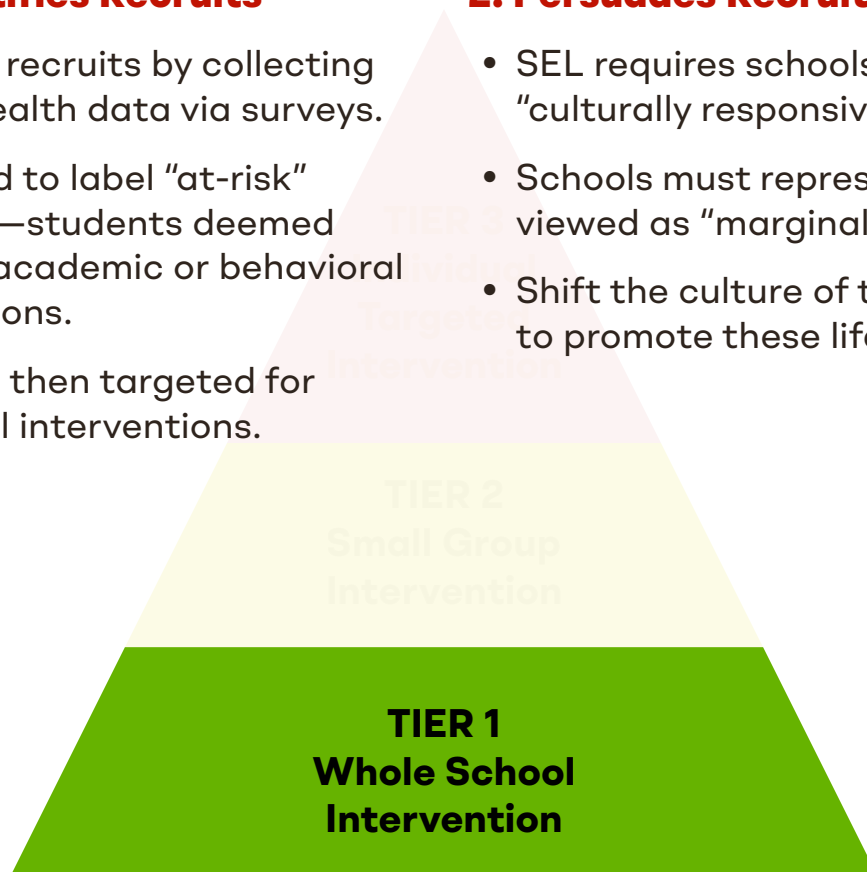
# Whole School Intervention

## 1. SEL Identifies Recruits

- Identifies recruits by collecting mental health data via surveys.
- Data used to label “at-risk” students—students deemed failing in academic or behavioral expectations.
- Identified then targeted for additional interventions.

## 2. Persuades Recruits

- SEL requires schools to be “culturally responsive.”
- Schools must represent identities viewed as “marginalized.”
- Shift the culture of the schools to promote these lifestyles.



# TIER 1

## ➔ **The Fiction They Sell**

- Means Create Just Ends
- Informed Consent
- Individuality/Diversity
- Facilitates Change



## ➔ **The Reality**

- Ends Justify Means
- Deceptive Data Gathering
- Conformity/Assimilation
- Preserves Organizational Power

# Small Group Intervention

## 3. Love Bombing

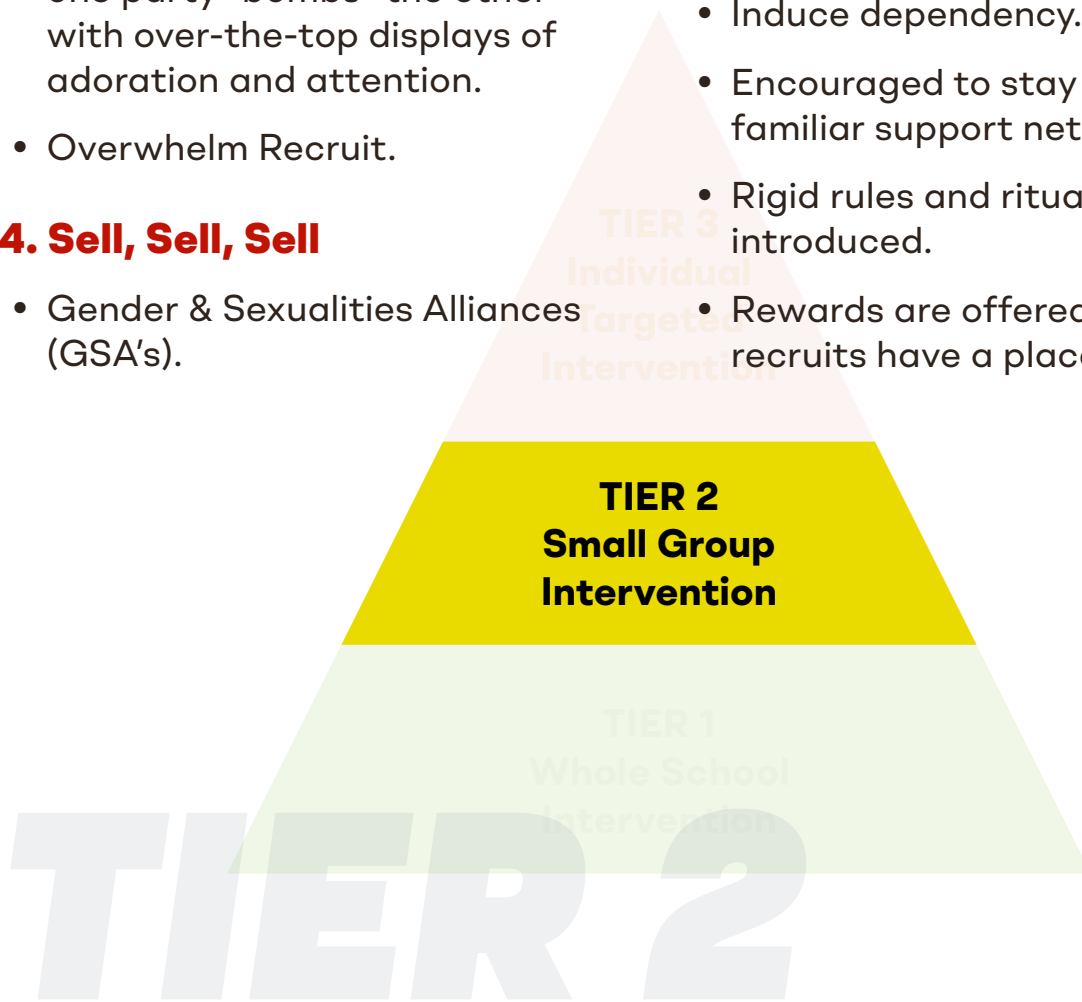
- Pattern of behavior in which one party “bombs” the other with over-the-top displays of adoration and attention.
- Overwhelm Recruit.

## 4. Sell, Sell, Sell

- Gender & Sexualities Alliances (GSA’s).

## 5. Tough Love & Group identity

- Reduce autonomy.
- Induce dependency.
- Encouraged to stay away from familiar support networks.
- Rigid rules and rituals may be introduced.
- Rewards are offered because recruits have a place to belong.



## ➔ The Fiction They Sell

- Group Collaboration
- Create Safe Spaces
- Idealization
- Adoration/Attention



## ➔ The Reality

- Reduces Autonomy
- Isolate
- Devaluation
- Induces Dependency

# Individual Targeted Intervention

## 6. Renounce Loved Ones

- School Counselors, social workers, psychologists provide confidential services to recruits.
- Affirm identities.
- Cultivate the view that parents of traditional values/morals are out of touch with reality or even neglectful.

## 7. Introduction of Core Beliefs

- School Counselors, social workers, and psychologists engage students in conversations about gender ideology as objective truth.
- Students are influenced to assume new identities through a system that will affirm, support, and celebrate them for it.

**TIER 3**  
**Individual**  
**Targeted**  
**Intervention**

## 8. Zero Tolerance of Criticism

- School culture supports the use of preferred pronouns, inclusive restrooms and gender ideology.
- Anyone who refutes this is at risk of being ostracized or having disciplinary action. LGBTQ flags, propaganda.

**TIER 3**

### ➔ **The Fiction They Sell**

- Confidentiality
- Conscience Culture
- Freedom of Speech
- Critical Thinking



### ➔ **The Reality**

- Insulate Recruit from Parent
- Indoctrination
- Zero Tolerance of Criticism
- Obedience

# CALL TO ACTION

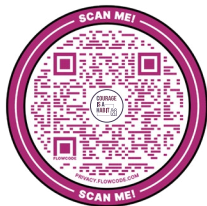
Share this primer with fellow parents and community members, and encourage them to adopt the term "Cult" when referring to Transgender indoctrination.



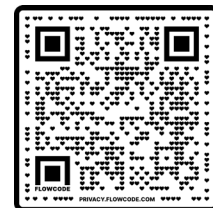
## CULT FICTION

8 Steps To Cult Indoctrination

**IF YOU DO NOT STAND UP  
FOR YOUR CHILDREN TODAY**  
*THEY WILL LIVE ON THEIR KNEES TOMORROW*



[COURAGEISAHABIT.ORG](https://courageisahabit.org)



[COURAGEOUS SUPPORTER](https://courageous-supporter.com)